

# ALTPITCH 3.0.0.19 USER MANUAL

## Table of Contents

<b>OVERVIEW .....</b>	<b>2</b>
<b>KEY FEATURES.....</b>	<b>2</b>
<b>HARDWARE AND SOFTWARE REQUIREMENTS .....</b>	<b>2</b>
<b>INSTALLATION.....</b>	<b>2</b>
<b>ALTPITCH GENERAL DESCRIPTION AND DESIGN.....</b>	<b>4</b>
<b>HOW TO CREATE, SELECT, AND EDIT USER ACCOUNTS .....</b>	<b>5</b>
To Create a New User Profile.....	5
To Delete an existing User Profile.....	5
To Select and Switch Between Users .....	5
<b>HOW TO CHOOSE MODES AND LEVELS .....</b>	<b>6</b>
<b>BEFORE YOU START .....</b>	<b>6</b>
<b>HOW TO PRACTICE .....</b>	<b>7</b>
Training mode .....	7
Test Mode.....	7
<b>OTHER CONFIGURATIONS.....</b>	<b>8</b>
How to Choose/Edit the Type of Generated Sounds.....	8
How to Choose/Edit the Length of Generated Sounds .....	8
How to Separate Questions with a Random Noise .....	9

## Overview

AltPitch is a perfect pitch ear training software designed to help musicians at different levels develop perfect pitch memory and color hearing by generating equal tempered notes for identification by users. AltPitch can also help musicians train their relative pitch, its main objective is to train users to identify notes without an identified reference pitch.

AltPitch is based on B. Khell's method for ear training. This method has been tested on musicians at different levels who showed significant improvement after consistent use.

## Key Features

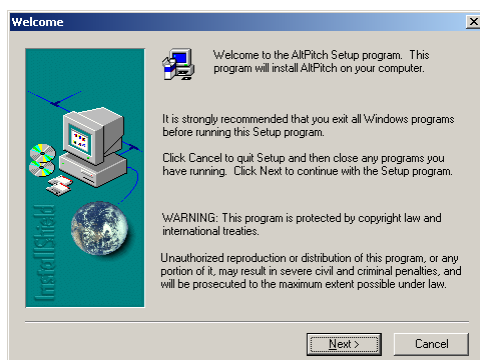
- AltPitch generates sounds of equal tempered notes for identification
- Users can choose and modify the range of generated notes (up to 72 semitones)
- Users can run either harmonic or melodic modes (allowing up to 8 simultaneous notes)
- AltPitch saves the history and scores of each user to illustrate their progress
- AltPitch can play any General Midi sound
- Users can choose from 267 different levels. All levels are displayed on a two dimensional matrix and users can pick their level by choosing any point on the matrix (darker colors indicate harder levels)

## Hardware and software requirements

- PC running windows® XP
- MIDI-capable sound card

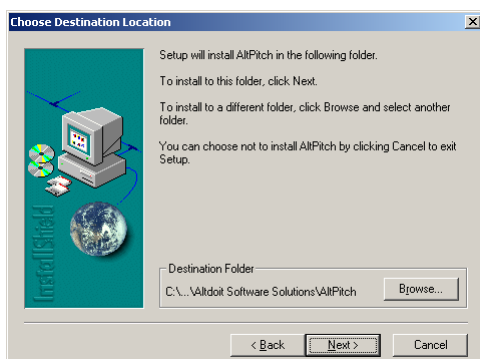
## Installation

1. Go to [http://www.altdoit.com/index\\_products.htm](http://www.altdoit.com/index_products.htm) and download AltPitch Software
2. Extract and run setup.exe
3. In the **Welcome** dialog click **Next** to proceed



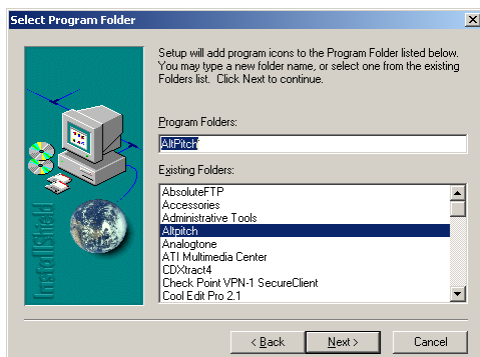
Welcome

4. In the **Choose Destination Location** dialog click **Next** or click **Browse** if you want to change the default destination folder



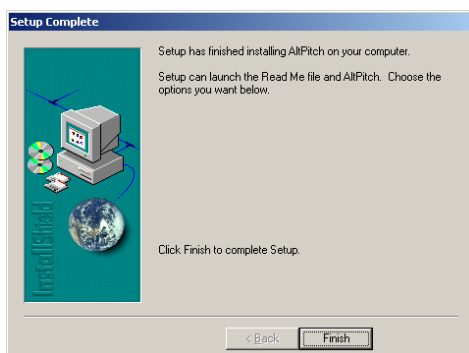
Choose Destination Location

5. In the **Select Program Folder** dialog click **Next**, or type a new program folder In the **Program Folders** box



Select Program Folder

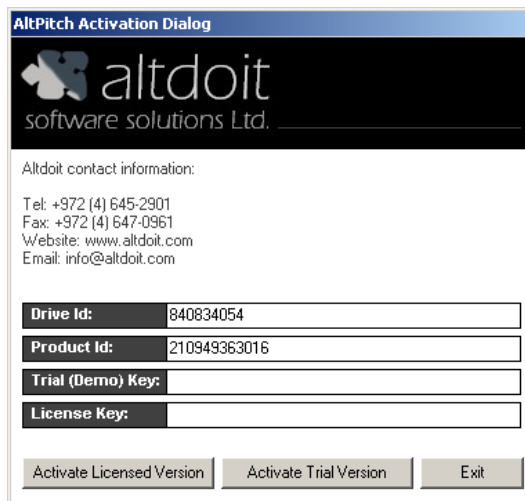
6. In the **Setup Complete** Dialog click **Finish**



Setup Complete

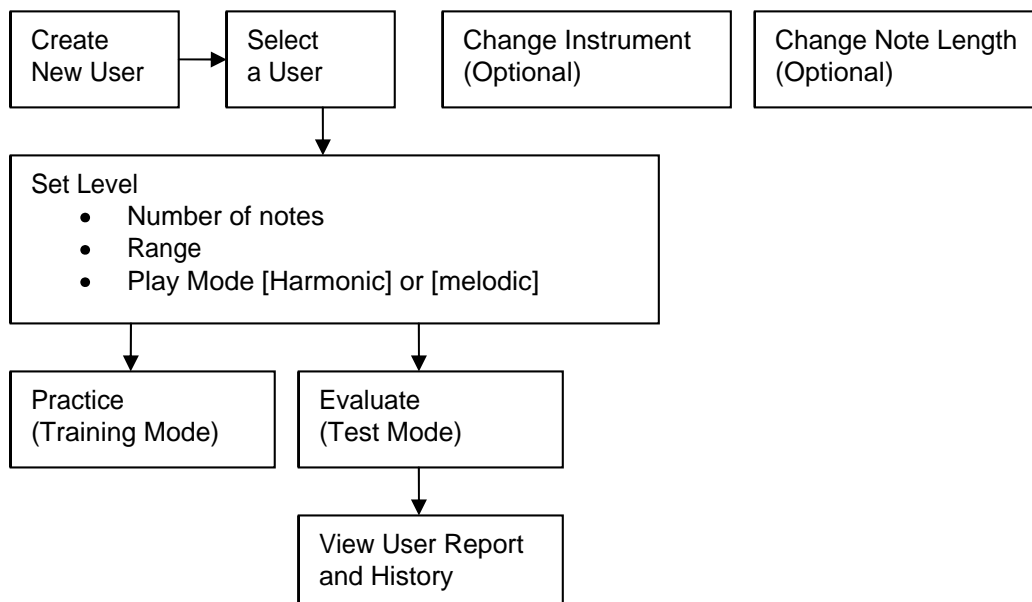
7. You can now run AltPitch by clicking the icon created on your desktop

8. Running AltPitch for the first time requires an activation key



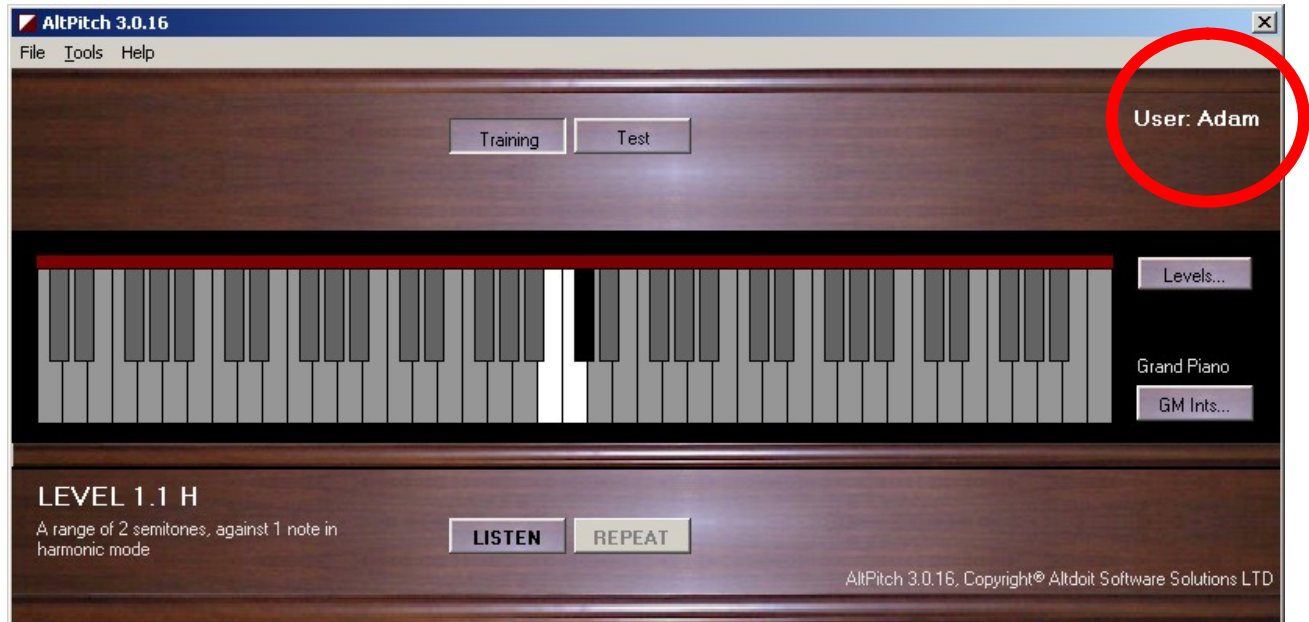
9. To obtain an activation key, please email us your [Drive Id], [Product Id] to [info@altdoit.com](mailto:info@altdoit.com). You will shortly receive an email with your activation key.
10. Type in the activation key and click **Activate Licensed Version** if you already purchased AltPitch or **Activate Trial Version** if you wish to try the software for free.
11. You can now enjoy using AltPitch!

## AltPitch General Description and Design



## How to Create, Select, and Edit User Accounts

Users are encouraged to create and use their own profile in order to personalize their experience and enjoy all that AltPitch offers, including choosing between levels and testing and storing their progress.



### To Create a New User Profile

1. On the **File** menu, click **Add/Edit/Delete**
2. Click **New** to create new user profile
3. Choose a **User Name**
4. Click **Save**

### To Delete an existing User Profile

1. On the **File** menu, click **Add/Edit/Delete**
2. In the **Users List** box click on the user name you wish to delete
3. Click **Delete**

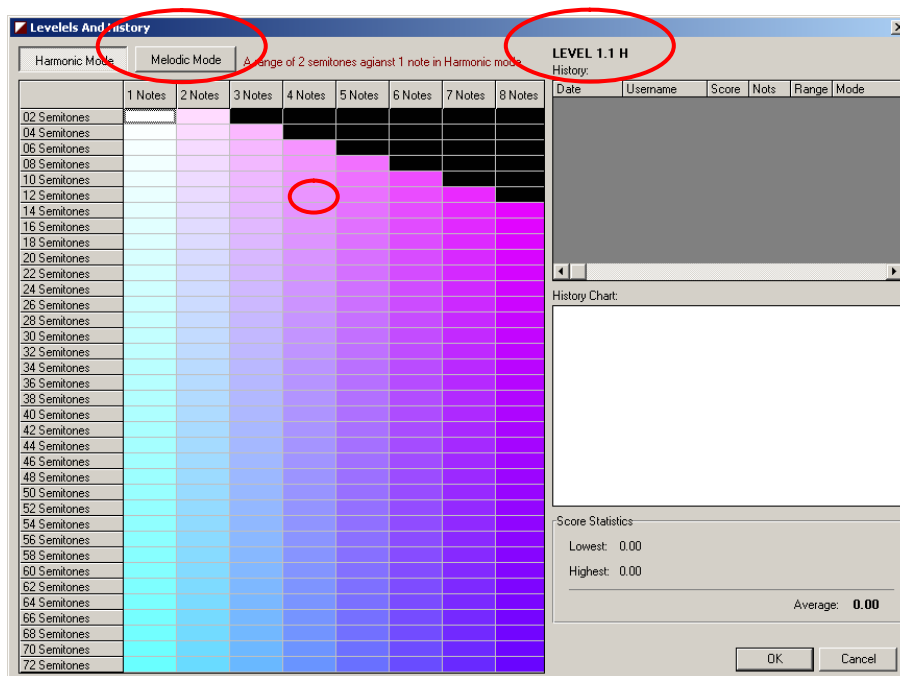
### To Select and Switch Between Users

1. On the **File** menu, click **Add/Edit/Delete**
2. In the **Users List** box click a user to be selected
3. Click **Select**

## How to Choose Modes and Levels

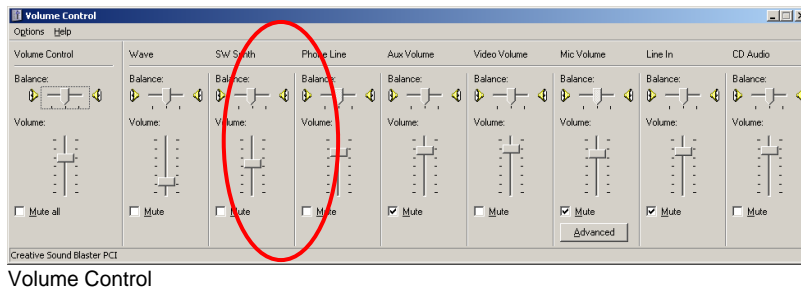
Users can choose between 2 different modes ([melodic] and [harmonic]) and 267 different levels under each mode.

1. Click **Levels** to launch the **Levels and History** dialog box.
2. Choose your mode by clicking either on the Harmonic or Melodic Mode.
  - Click Melodic Mode if you wish to listen to a single note at a time.
  - Click Harmonic Mode if you wish to choose to listen to multiple notes simultaneously (2 to 8 notes).
3. To choose difficulty level, click on the cell in matrix below which matches your choice of number of notes and Semitones.
  - The **Number of Notes** indicates the number of successive notes to be generated for your identification in a single question.
  - The **Number of Semitones** indicates the range of notes from which the generated notes are selected, keeping in mind that the middle C is in the center of any selected range. E.g., selecting the range of 2 Semitones means that the software will generate a note that is either the middle c, c major, or b minor.
4. Click Ok to start practicing



### Before You Start

- Make sure your speakers are connected
- Make sure that the **SW Synth** panel is not muted (find **SW Synth** in your system volume control)



## How to Practice

Once you created a user profile and chose the difficulty level, you can start your ear training journey to enhance your perfect pitch skills.

You can use AltPitch either under the Training Mode or under the Test Mode. When you choose the Test Mode, the results are stored in your history which will enable you to monitor your progress. Choose the Test Mode when you wish to see your score or store your results in your history file. Choose the Training Mode when you simply want to practice without tracking your results.

### Training mode

- In the main dialog click **Training**
- Click **Listen**
- Choose the piano keyboard to pick up the note/notes you listened to in the order listened to. Note that the enabled notes on the keyboard show the range of notes chosen (the number of Semitones).
- If your answer is correct, the selected note will become green. If your answer is incorrect, it will become red.

### Test Mode

In order to monitor your progress and keep track of it, after practicing, run the Test Mode and answer the 10 part test (the test mode will automatically use the same level of difficulty you practiced). You can view your score upon completion of test. The score, the level of difficulty, and the date will be stored in your history.

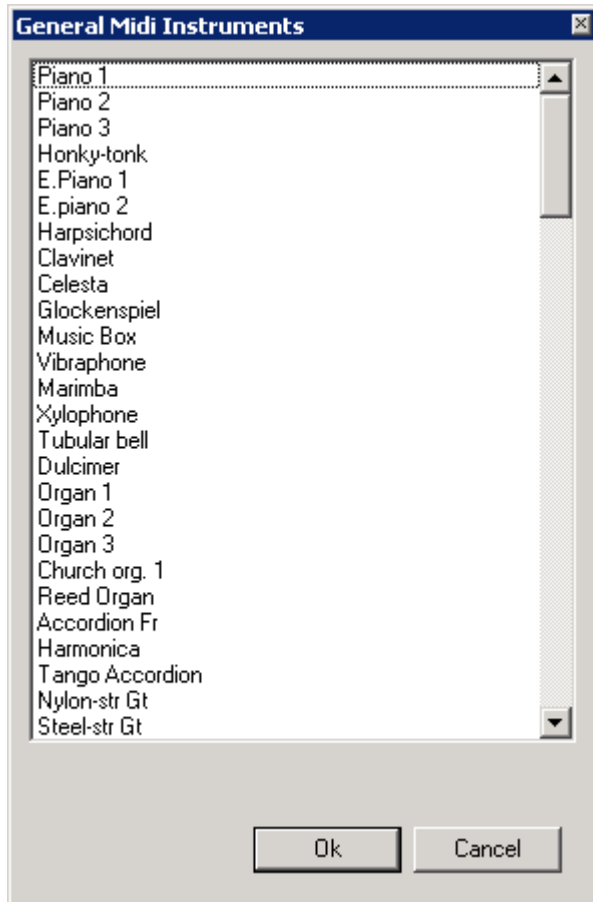
The number of tests taken for each level will be stored in the matching matrix cell. Go to the Matrix to see how many tests you took and for which levels. Double clicking on the cell will take you to your score. An empty cell means that you never took the test for that level.

This tool is effective and we recommend that you utilize it. This way you can evaluate your progress and plan your practice accordingly.

## Other Configurations

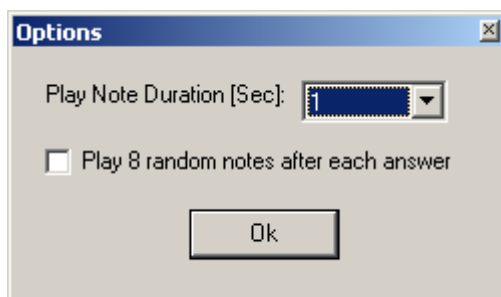
### How to Choose/Edit the Type of Generated Sounds

1. Click on the **GM-Inst**
2. Choose your sound/instrument from the **General Midi Instrument**
3. Click **Ok**



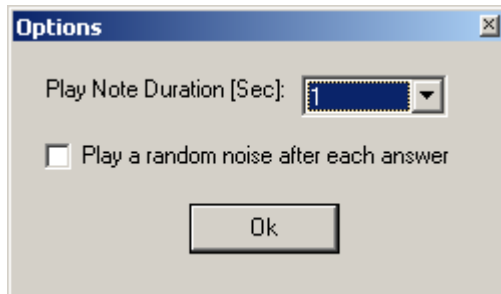
### How to Choose/Edit the Length of Generated Sounds

4. On the **Tools** menu, click **Options**
5. In the **Note Play Duration** box click number of seconds for each sound
6. Click **Ok**



## How to Separate Questions with a Random Noise

1. On the **Tools** menu, click **Options**
2. Click on **Play a random noise...** check box
3. Click **Ok**



When random noise checkbox is checked then AltPitch will play a chord of random notes after each answer. Such noise can be useful in breaking the relationship between questions and gives each exercise more independency.